




AVRASYA
ÇELİK

AVRASYA HADDE ÇELİK LTD. ŞTİ.

AVRASYA
STEEL

MÜŞTERİ CUSTOMER	
BAG NO BUNDLE NO	00002852100
ÖLÇÜ (MM) MEASURE	20
KALİTE QUALITY	SAE1008
KESİT SIZE	YUVARLAK
BOY (MM) LENGTH	6000
DÖKÜM NO HEAT NO	10050429
ÜRT. SEKL. PROD. TYPE	SOĞUK HADDE
MİKTAR (KG) WEIGHT	1 504

Harcımera Çelik Dökümçüleri Sanayi Sitesi,
Gökçeören Mah. Çelikçilik Sok. No:55
Çarşıbaşı / Kocaeli
Tel : 0262 658 9674 Faks : 0262 658 9578
www.avrasyasteel.com



AVRASYA
STEEL

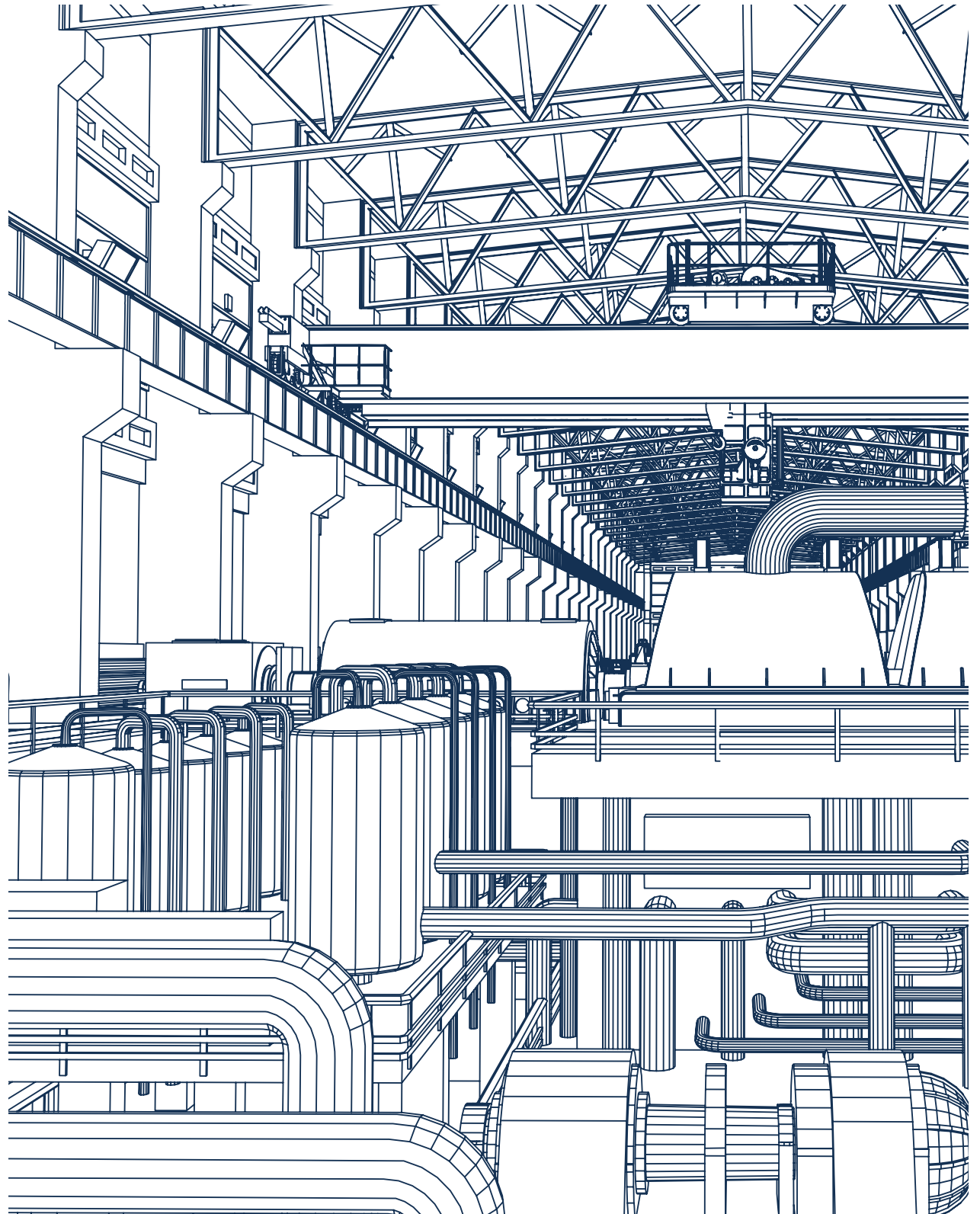
MÜŞTERİ CUSTOMER	
BAG NO BUNDLE NO	0000285210
ÖLÇÜ (MM) MEASURE	20
KALİTE QUALITY	SAE1008
KESİT SIZE	YUVARLAK
BOY (MM) LENGTH	6000
DÖKÜM NO HEAT NO	10050429
ÜRT. SEKL. PROD. TYPE	SOĞUK HADDE
MİKTAR (KG) WEIGHT	1 504

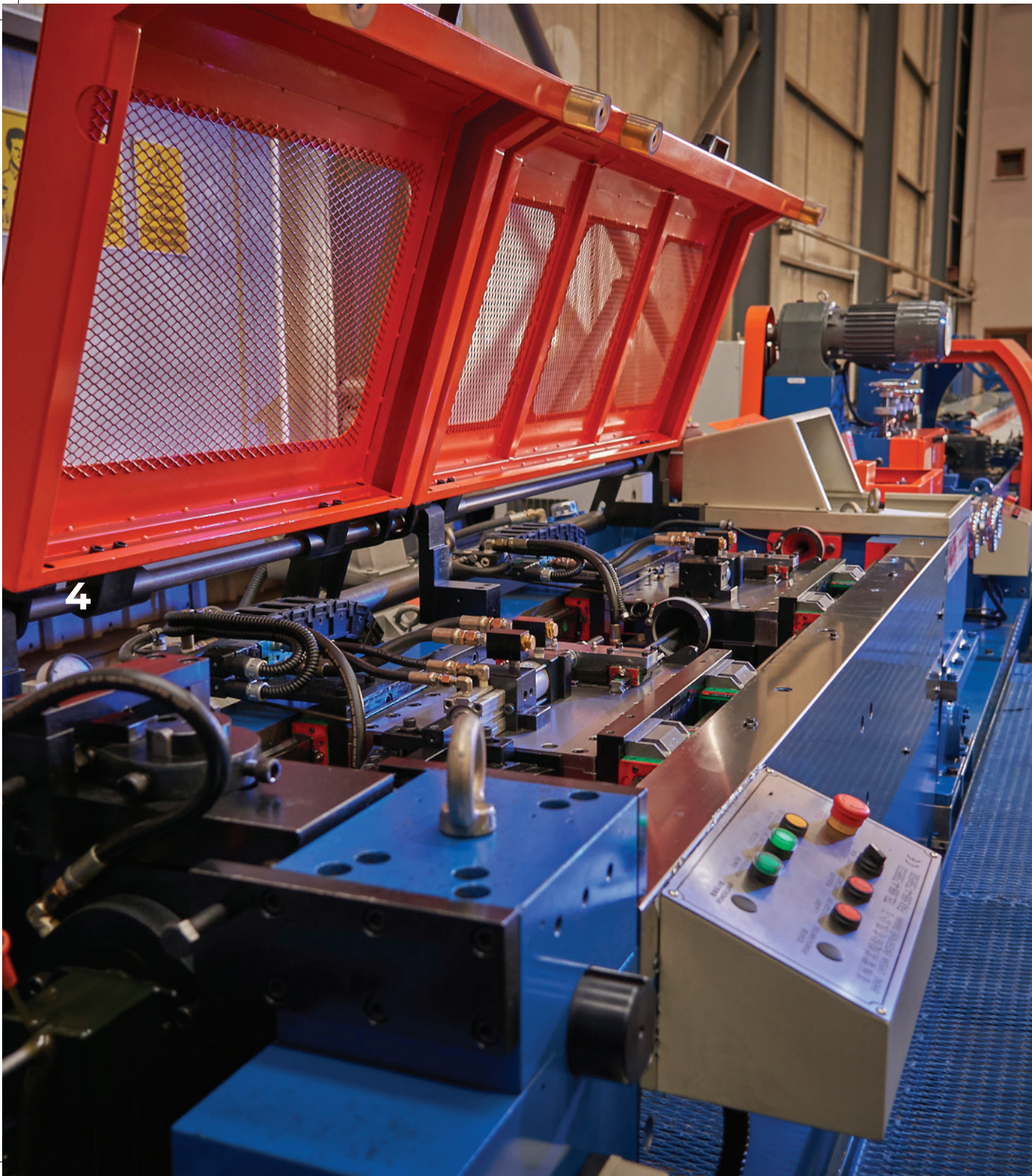
Harcımera Çelik Dökümçüleri Sanayi Sitesi,
Gökçeören Mah. Çelikçilik Sok. No:55
Çarşıbaşı / Kocaeli
Tel : 0262 658 9674 Faks : 0262 658 9578
www.avrasyasteel.com



CONTENT

ABOUT US	4
VISION/MISSION	5
QUALITY POLICY	6
SPECIAL STEEL GROUP	9
Quality Based Special Steel Groups	14
Free Cutting Steels	15
Carbon Steels	16
Structural Steels	17
Heat Treatable Steels	19
Spring Steels	20
Stainless Steels	21
Case Hardening Steels	22
Bearing Steels	23
Micro Alloyed Steels	24
IRON GROUP	27
Box Profile	31
Drawing Profiles	32
Pipes	35
Sheets	36





ABOUT US

As Avrasya Hadde Çelik Company, we have set out our targets to be a quality & qualified steel producer; In 2021, a cold drawing line was established and commissioned in the factory in accordance with the industrial standard 4.0. Apart from the special steels we produce, we benefit from our raw material storages that we import as well as a variety ranges of other products. We PRODUCE our valuable customers' orders with high quality, competitive prices at the lowest time possible.



VISION

To be a customer-oriented manufacturer that stands out with its quality in the iron and steel industry.



MISSION

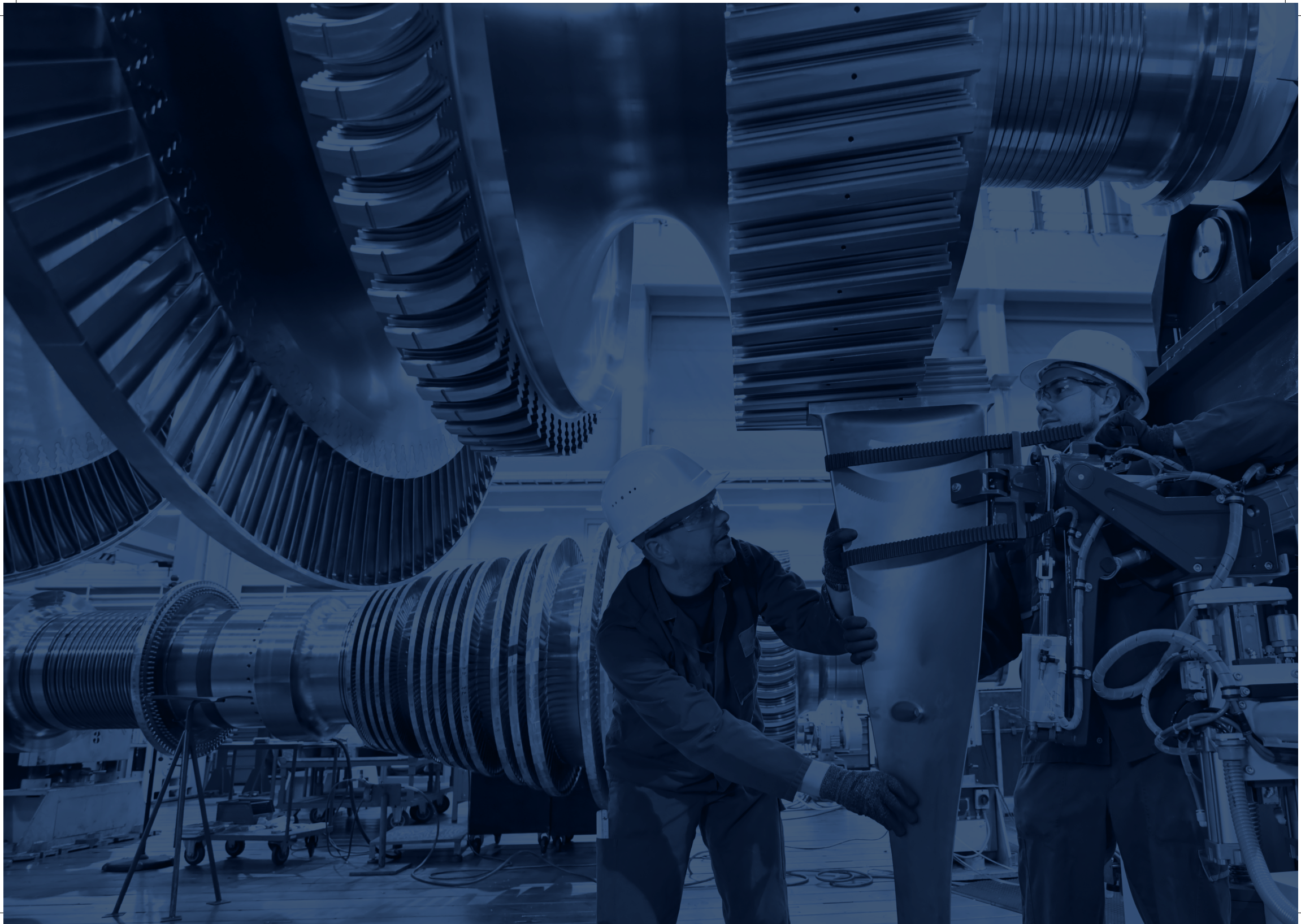
To be a quality-oriented, ever-developing supplier that considers the customer satisfaction a principle and respects society and the environment.



QUALITY POLICY

As Avrasya Hadde Çelik, with the participation of our technical team and experienced managers; we carry out all our activities within the scope of our quality policy which we have established on the basis of the principle of continuous improvement. We reduce our impact on the environment by improving our production methods in accordance with Quality Management Systems; and we are also working round the clock to fulfill customer demands in the fastest time and best quality possible.





A blue-tinted photograph of industrial machinery, likely a CNC machine, with various components like a vertical column, horizontal beam, and tool head visible. The image is partially obscured by a dark blue patterned overlay on the right side.

SPECIAL STEEL GROUP



SPECIAL STEELS GROUP

1 QUALITY BASED

- ▶ FREE CUTTING
- ▶ CARBON STEELS
- ▶ STRUCTURAL
- ▶ HEAT TREATABLE
- ▶ SPRING STEELS
- ▶ STAINLESS STEELS
- ▶ CASE HARDENING
- ▶ BEARING STEELS
- ▶ MICRO ALLOYES STEELS

2 SECTION BASED

- ▶ ROUND STEELS
- ▶ SQUARE STEELS
- ▶ HEXAGON STEELS
- ▶ LAMA STEELS

STEELS-BASED ON QUALITY

CARBON STEELS

SAE 1008-1010-1015-1016-1020-1030-1035- 1040-1045-1050-1060

STRUCTURAL STEELS

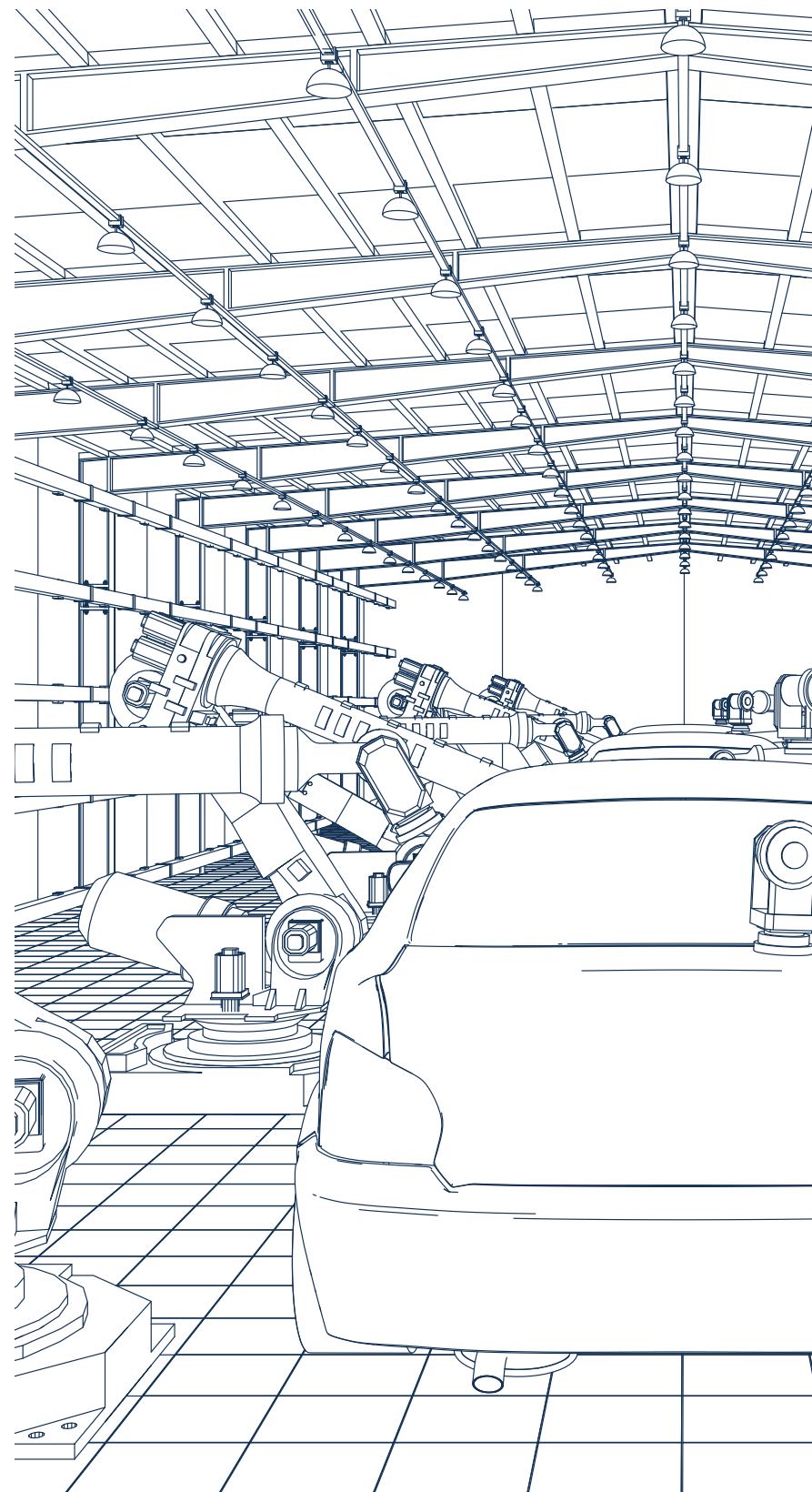
S235JR-S235J2G3(St37-2)-S275JR-S275J2G3(St44-2)-S355JO-S355JR-S355J2G3(St52-3) E235(St50-2)-E335(St60-2) E360(St70-2)

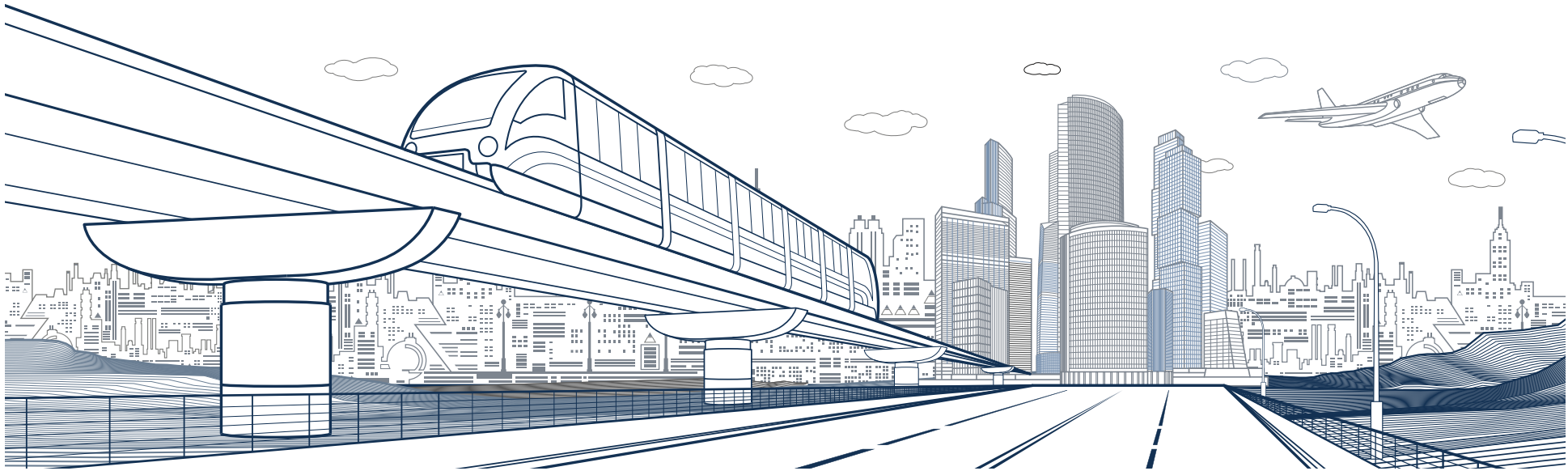
FREE CUTTING STEELS11SMnPb30 (9SMnPb28/SAE 12L13)- 11SMnPb37 (9SMnPb36/SAE 12L14)
11SMn3030 (9SMn28/SAE1213) - 11SMn37(9SMn36/SAE1215)**HEAT TREATABLE STEELS**41Cr4(SAE 5140) - 42CrMo4(SAE 4140) - 34CrNiMo6(SAE 4340) -
34CrMo4 (4135) - 50CrMo4 (SAE 4150) - 34Cr4 (SAE 5132)**SPRING STEELS**60SiMn5 - 55Cr3 (SAE 5155) - 51CrV4 (SAE 6150) - 60SiCr7 (SAE 9262) -
S5517 (SAE 9255)**STAINLESS STEELS**

303 - 304 - 304L - 316 - 316L - 420

CASE HARDENING STEELS20NiCrMo2 (SAE 8620) - 16MnCr5 (SAE5115)- 20MnCr5 (SAE 5120)
- 16MnCrS5 - 20MnCrS5 - 17CrNiMo6 - 16MnCrPb5 - 15CrNi6 -
18CrNi8**BEARING STEELS**100Cr6 - 100CrMn6 - 100CrMn4 - 100Cr5 - 20MnCr5 - 20NiCrMo2 -
16MnCr5**MICRO ALLOYED STEELS**

10V45 - 38MnV56 - 30MnV56 - 38MnSiV5i - 5AE1141





STEELS AND PRODUCTION STANDARDS ACCORDING TO THEIR SECTIONS

SECTION		SIZE (MM)	HOT DRAWN STANDARDS		COLD DRAWN STANDARDS
ROUND	COIL	Ø5 - Ø42	New Norm (TS EN 10060)		TS EN 10278/h9-h11
	ROLLING STEELS	Ø5 - Ø340			
	FORGED STEELS	Ø200 - Ø1200	Old Norm (DIN 1013)		
	BRIGHT STEELS	Ø5 - Ø160			
HEXAGON	HOT DRAWN	HEX14,5 - HEX80	New Norm (TS EN 10061)		TS EN 10278/h11
	COLD DRAWN	HEX6 - HEX80	Old Norm (DIN 1015)		
LAMA	HOT DRAWN	20*4 - 800*450	Cutting Edge	New Norm (TS EN 10058)	TS EN 10278/h11
				Old Norm (DIN 1017)	
	COLD DRAWN	10*4 - 400*100	Radius Edge	New Norm (TS EN 10092-1)	
				Old Norm (DIN 4620)	
SQUARE	HOT DRAWN	8*8 - 600*600	New Norm (TS EN 10061)		TS EN 10278/h11
	COLD DRAWN	5*5 - 60*60	Old Norm (DIN 1015)		

14

SPECIAL STEEL GROUPS

QUALITY BASED





FREE CUTTING STEELS

15

- ▶ Thanks to the sulfur and phosphorus element in its structure, it provides chip brittleness, with low cutting forces. It has a high machinability feature.
- ▶ Sulfur also reduces the toughness, ductility and weldability of the material.
- ▶ A good surface quality is obtained with less surface roughness on the machined part.
- ▶ Narrow dimensional tolerances can be achieved by working at the desired sensitivities.
- ▶ It increases the machining capability by providing lubrication during machining in free cutting steels alloyed with lead element. It extends the life of the tools by reducing the friction between the cutting tool and the part depending on the speed of the machine during the machining process.
- ▶ It has the ability of getting improved and cemented.

CARBON STEELS



- It is generally used in the manufacturing and building sectors.
- As the carbon in the steel increases; hardness, yield and shrinkage strength properties improve.
- The increase in carbon ratio has a positive effect on wear resistance.
- As the amount of carbon increases, their plastic deformation ability decreases, so their ductility (% elongation and % section shrinkage) and toughness properties also decrease.
- The increase in the amount of carbon in the steel adversely affects the weldability.



STRUCTURAL STEELS

- ▶ Mechanical properties of transmission (cold rolled structural steels) steels depend on the amount of carbon in their structure.
- ▶ It provides high welding capability thanks to its low carbon value.
- ▶ With the manganese (Mn) value in its structure, it increases the yield and tensile strength without heat treatment.
- ▶ Since it does not perform at the level of free cutting steel in chip breaking, the processing time may be extended.
- ▶ It is economical.





HEAT TREATABLE STEELS

- ▶ Suitable for hardening in terms of carbon amounts.
- ▶ Reaches high tensile strength and toughness (impact strength) values after curing (annealing).
- ▶ They have a ductile structure.

SPRING STEELS

- ▶ They are materials with high ductility used as spring material.
- ▶ These steels have the ability to change shape in the elastic area under load, resist breakage and recover with the removal of the load.
- ▶ Spring ability depends on the amount of energy stored (elastic modulus) during elastic deformation.
- ▶ Elastic modulus changes at high temperatures and high alloy spring steels.
- ▶ This material is used in the production of flexible parts; Welding of parts, surface notch effect, internal cracks that may result from heat treatment increase the fracture effect.





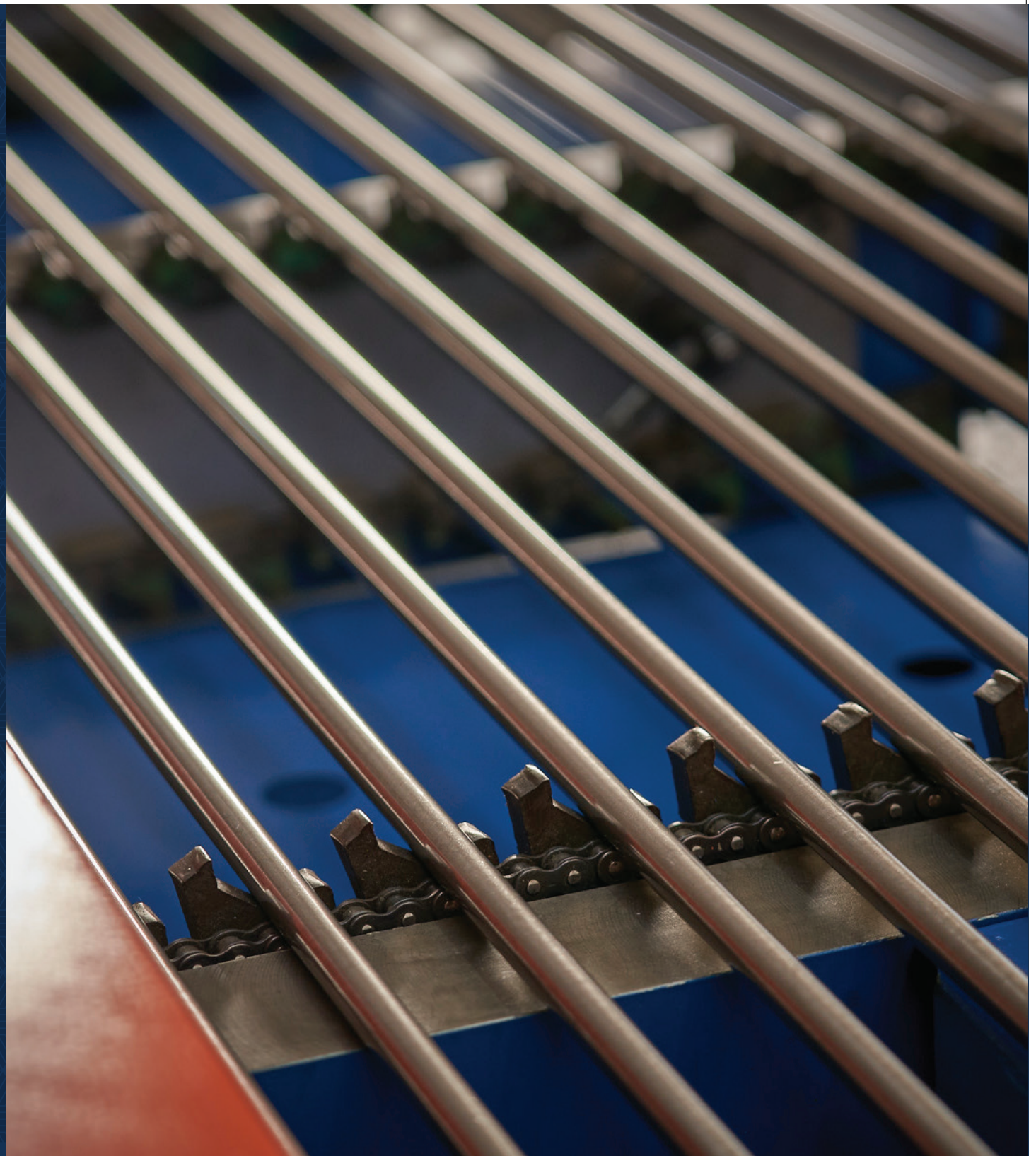
STAINLESS STEELS

- ▶ Stainless steels; they are alloy steels with high corrosion resistance that contain at least 10.5%-11% chromium (Cr) and maximum 1.2% carbon (C) by mass in their composition.
- ▶ Stainless steels can be easily formed by cutting, welding, hot and cold forming and machining processes.
- ▶ They are easy to clean.
- ▶ Since they are durable and easy-to-maintain materials, they increase the service life of the produced part and provide economic efficiency.

CASE HARDENING STEELS

22

- ▶ Case hardening steels have a high surface hardness and wear resistance, and a softer structure in the core.
- ▶ These ductile and tough steels are used in the manufacture of parts resistant to variable and impact stresses.
- ▶ Low carbon, unalloyed or alloyed steels.
- ▶ With case hardening steels, large variable and sudden loads are met and warping is prevented, while the inner parts of the steels can be easily processed.
- ▶ Good welding capabilities.





BEARING STEELS

- ▶ Bearing steels have a high proportion of carbon by mass in their chemical component.
- ▶ They are very hard so they can break under impact or shock loads.
- ▶ Bearing steels are used where there is friction, sliding surfaces and moving parts rolling on each other.
- ▶ It is used in the manufacture of point and linear contact parts due to its resistance to abrasion.
- ▶ It can be used in parts requiring high fatigue strength; as well as using for cutting, slitting, grinding applications with its hardness level.



MICRO ALLOYED STEELS

- ▶ Microalloying is the addition of very low amounts of Niobium (Nb), Vanadium (V), and Titanium (Ti)
- ▶ Developed as high strength steels.
- ▶ These steels also provide high yield-tensile strength, lightness, good cold formability and good weldability.







IRON GROUP

IRON GROUP

- ▶ BOX PROFILES
- ▶ DRAWING PROFILES
- ▶ PIPES
- ▶ SHEETS







BOX PROFILES

- ▶ Box profiles; produced as square or rectangular are hollow rods.
- ▶ It can be produced from hot and cold sheets, with high welding technology or cold forming.
- ▶ It is quite light because it is hollow, but hard and pressure resistant due to its vast surface.
- ▶ Shows high torsional strength.
- ▶ Box profiles can be painted with primer paint for corrosion resistance.

DRAWING PROFILES

32

- ▶ NPU Profile
- ▶ NPI Profile
- ▶ HEA Profile
- ▶ HEB Profile
- ▶ IPE Profile
- ▶ Square Irons
- ▶ Lama Irons
- ▶ Brackets



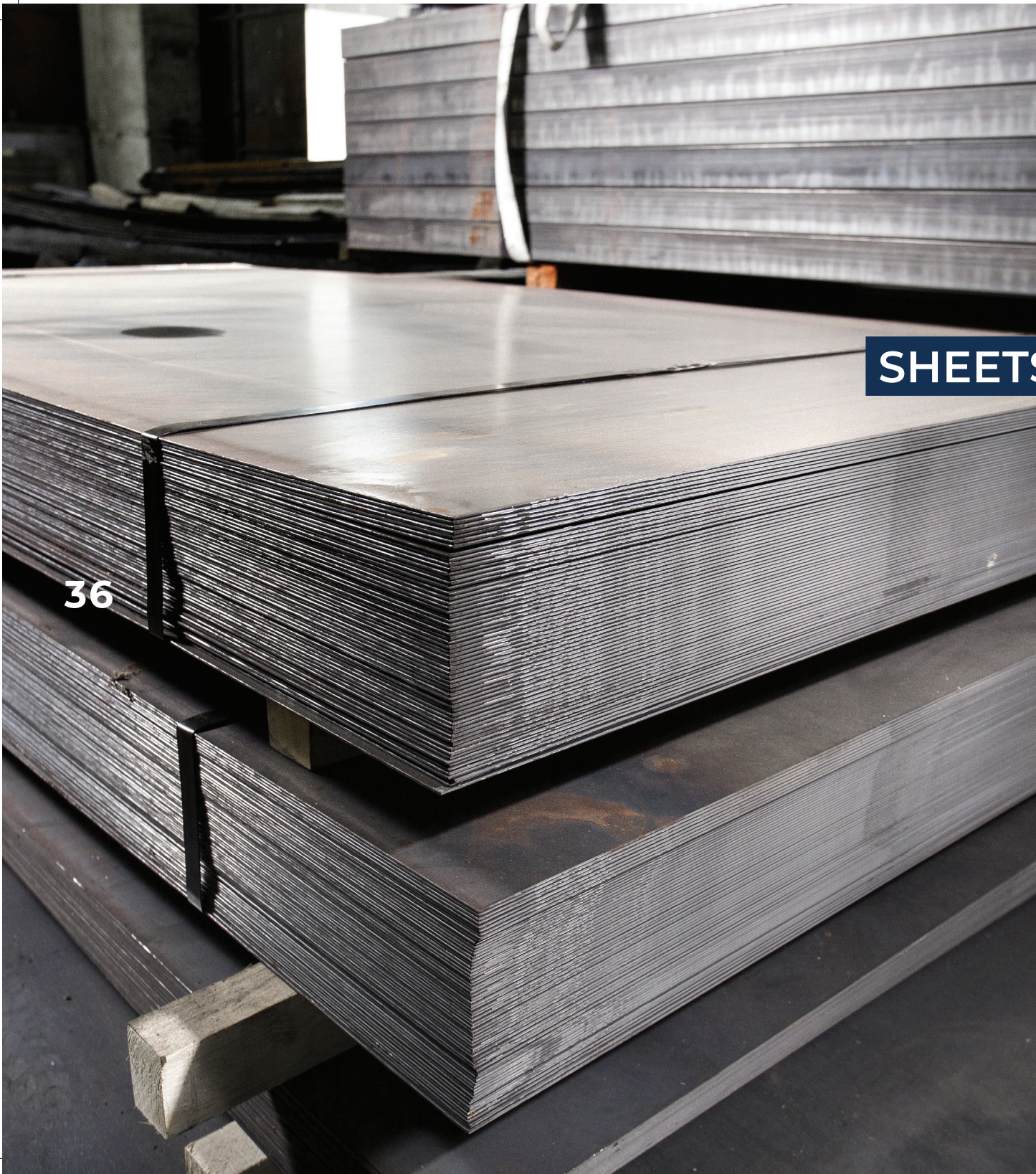






PIPES

- ▶ Industrial Pipes
- ▶ Boiler Pipes
- ▶ Water and Gas Pipes
- ▶ Construction Pipes



SHEETS

- ▶ DKP Black Sheets
- ▶ Checkered Patterned Sheets
- ▶ Gang-Tear Patterned Sheets
- ▶ Galvanized Sheets
- ▶ Trapezoidal Corrugated Sheets
- ▶ Roll Sheets





MÜŞTERİ
CUSTOMER

BAG NO
BUNDLE NO

00002965110

ÖLÇÜ (MM)
MEASURE

16

KALİTE
QUALITY

11SMNPB30



39

CONTACT



Marmara Geri Dönüşümcüler San. Sit.
Şekerpınar Mah. Göktürk Sok. No: 51/B
Çayırova / Kocaeli - Türkiye



T. +90 (262) 658 86 74
F. +90 (262) 658 95 87
M. info@avrasyacelik.com
W. www.avrasyacelik.com



AVRASYA
ÇELİK

AVRASYA HADDE ÇELİK LTD. ŞTİ.